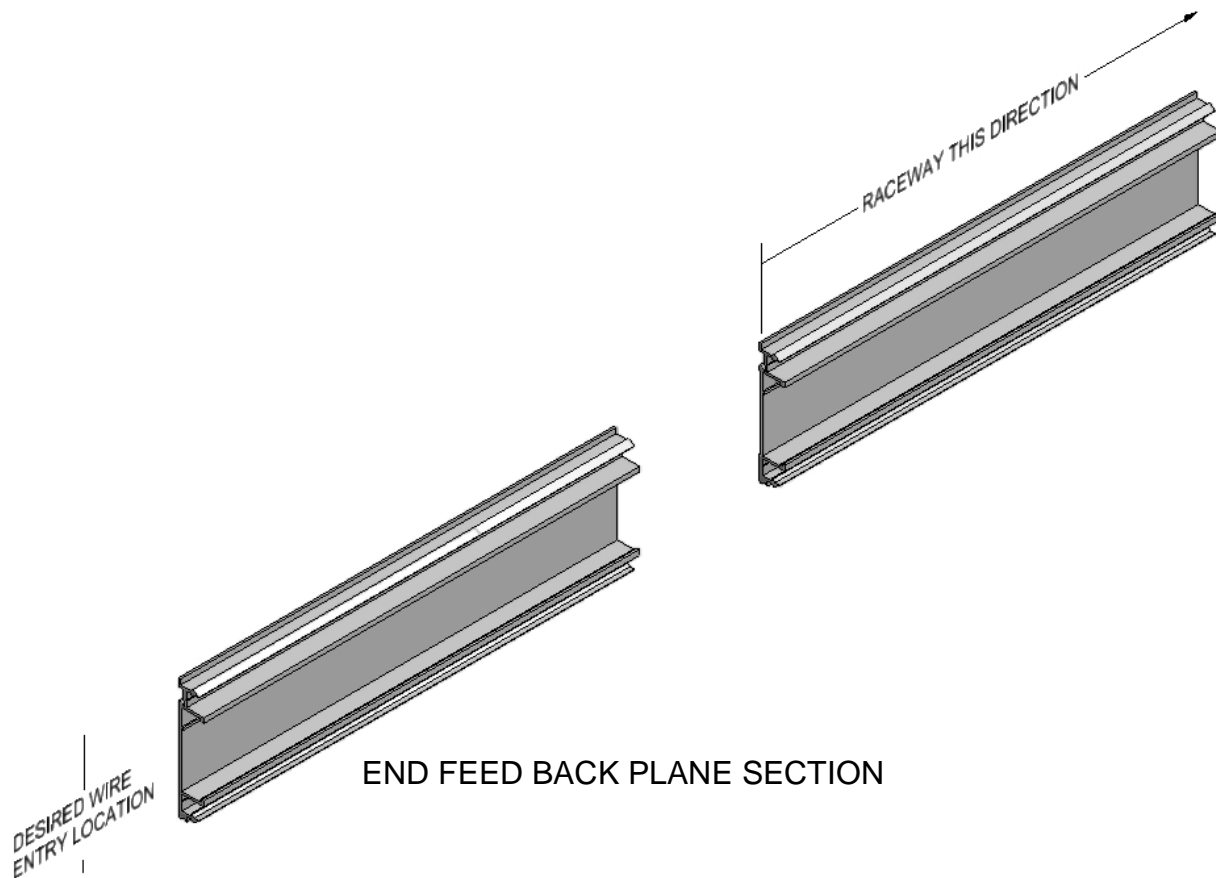


The URPF060-4(G)-SIL(Power only) or URDF060-4(G)-SIL (Power and Data) type Power feed starter sections are used to supply power to a run of Plug-in Raceway without the use of a junction box.

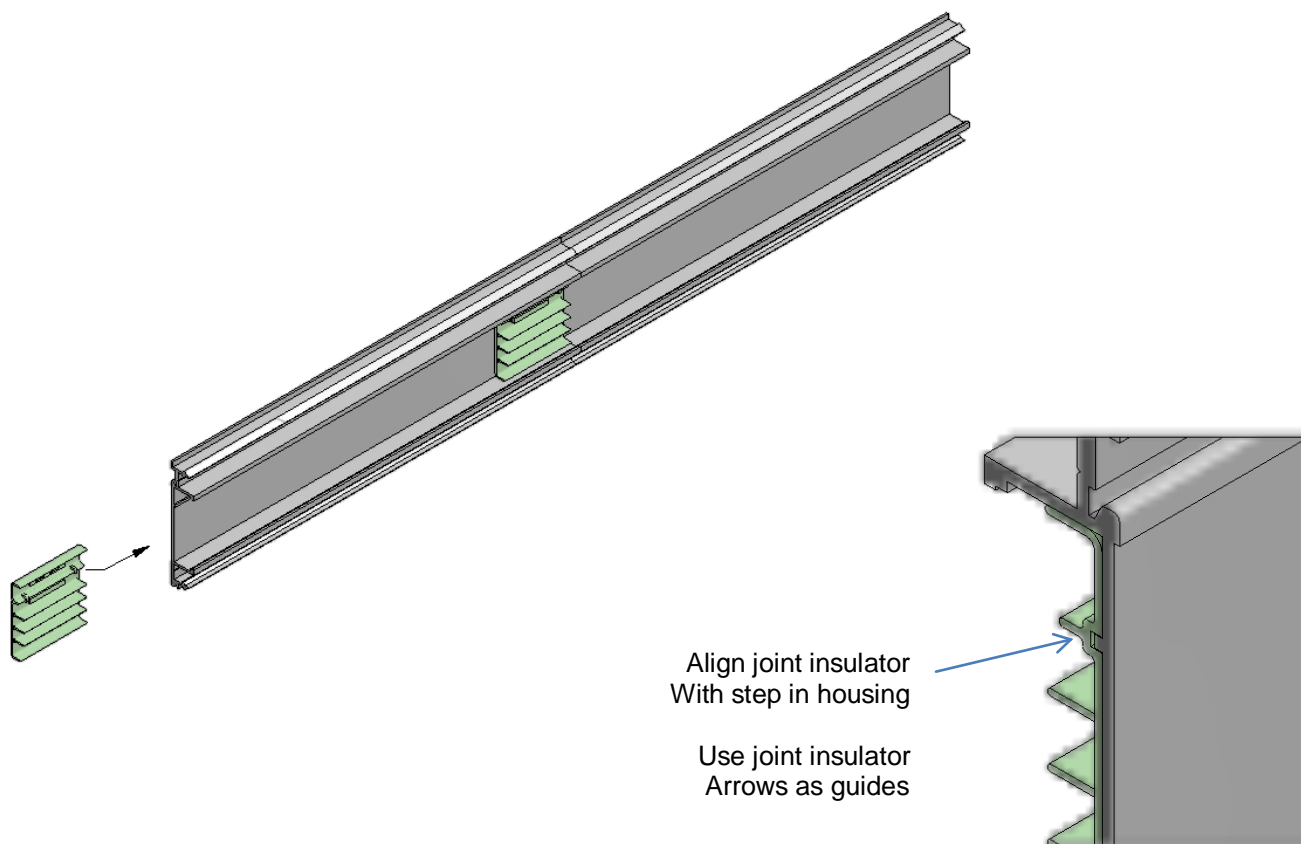
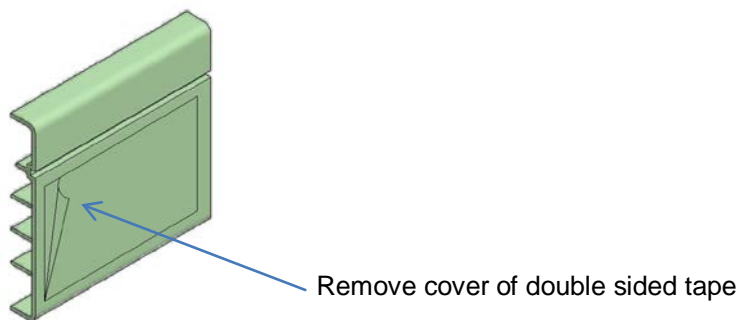
These power feeds are typically used where aesthetics are important.

**WARNING: MAKE SURE POWER IS OFF BEFORE MAKING ANY WIRE CONNECTIONS.**

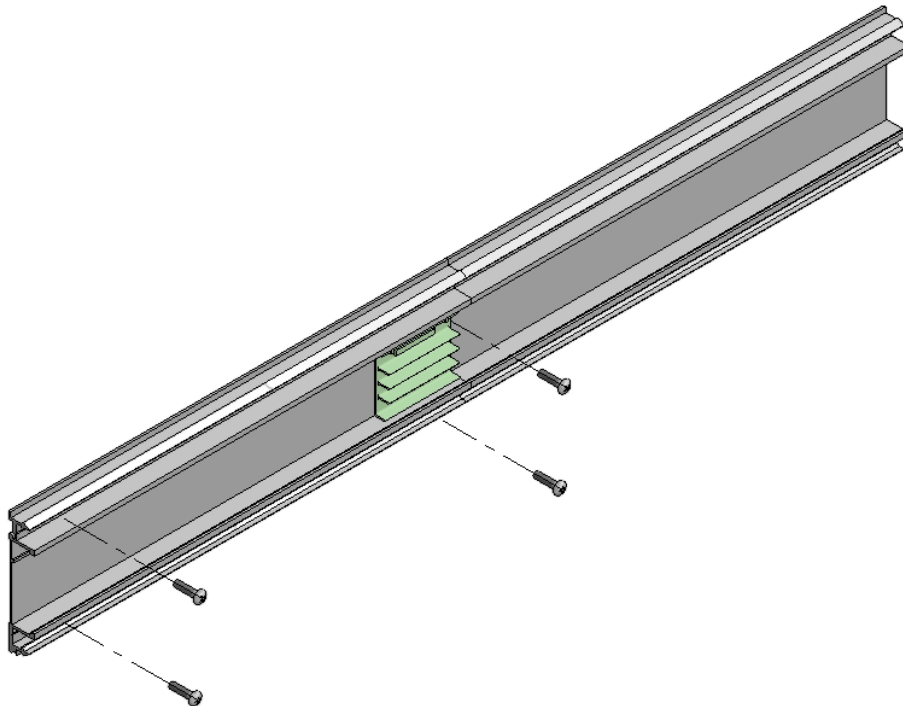
1. Start by locating where you want to bring in your field wires.



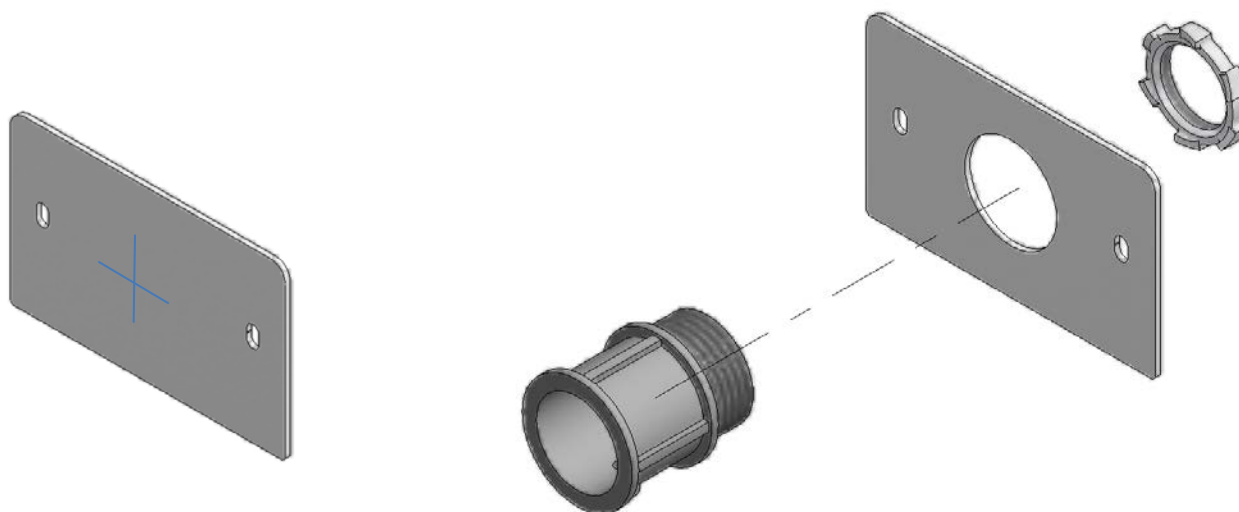
- Secure joint insulator to back plane by removing the cover of the double sided tape attached to the back of the joint insulator. Place the joint insulator such that it is flush with the end of the end feed section.



- Secure end feed section to surface using either the wall mounting clips (SRPWMC-PIR or SRDWMC-PIR) or the recommended screws for drywall (self-drilling drywall anchor with #8x1-1/2" flat head wood screw) or concrete (3/16x1-3/4" tapcon flat head screw).

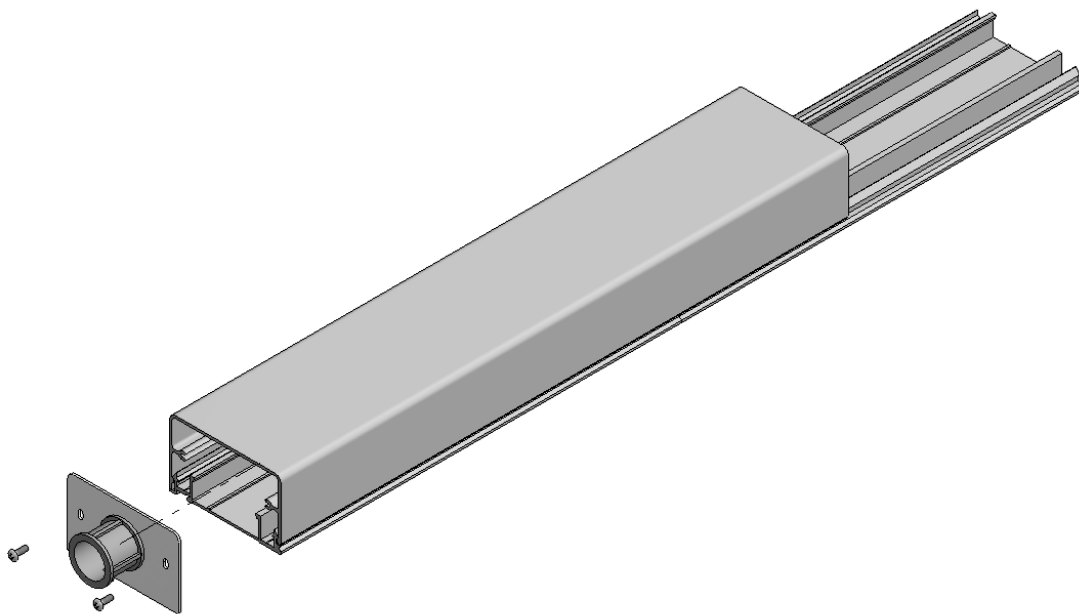


- Drill the appropriate size hole and install the conduit fitting in the end cap. (Conduit provided by customer).

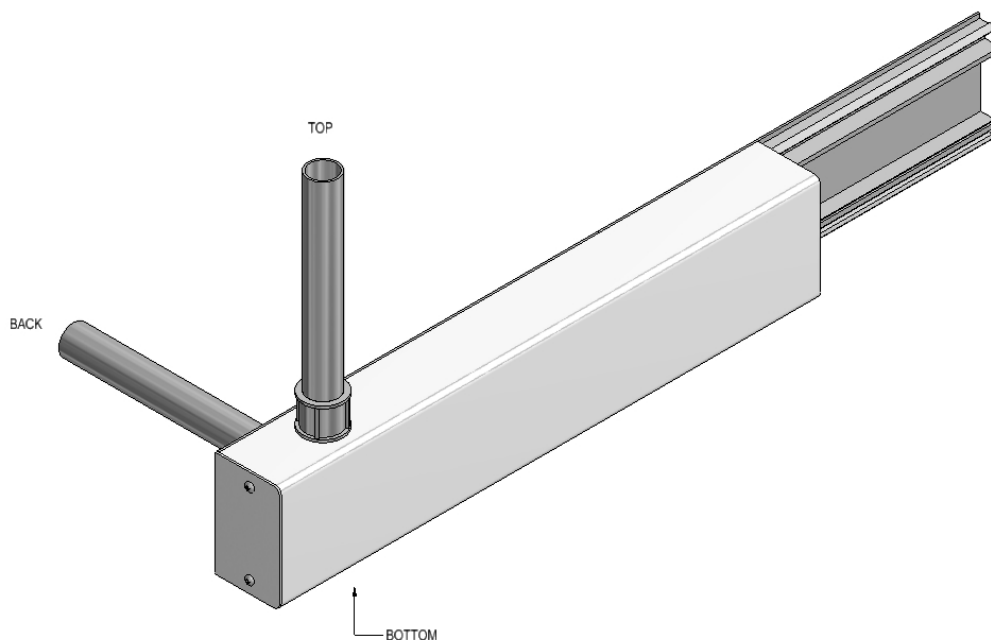


3

5. Secure the end cap to the raceway cover using the provided screws.

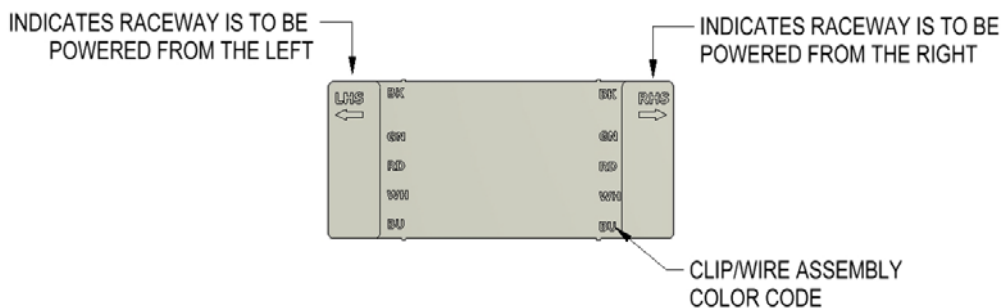


5a. Alternative feed entrance can be made through the top, bottom or back of the feed section. Additional modifications (not shown here) made in the field.

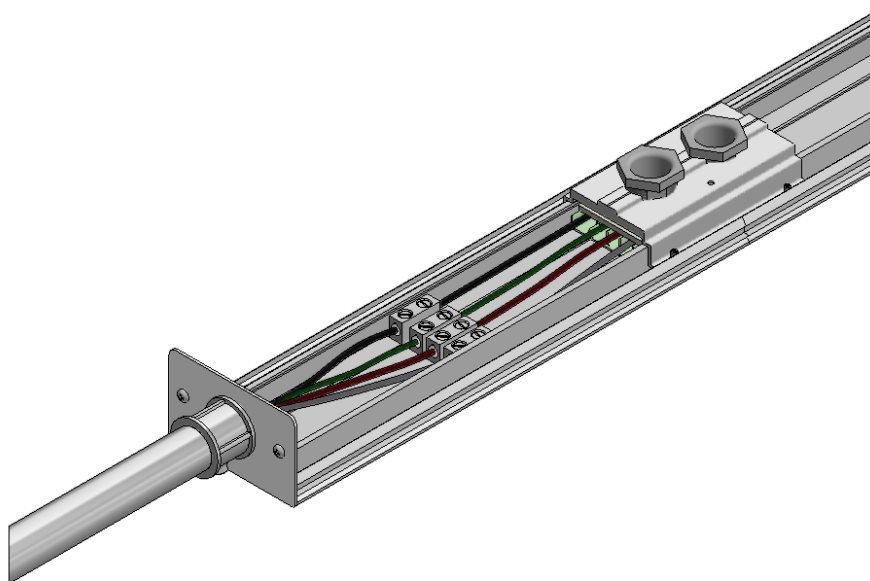


## PIR END FEED INSTRUCTIONS

6. Since the feed direction of the end feed unit has been established the color coded end feed wires may now be inserted into the connector body.



7. With the connector body and the wire clips assembled, mount the connector body in the end feed housing section. The bus connector should be located equal distance between the end of the end feed section and the beginning of the raceway section. Ensure that the bus connector engages the adjoining busbars in the standard manor. Slide the bus connector keeper over the bus connector such that the indicator hole is lined up at the section joint. Once the keeper is in position, turn the chase nipples to lock the connector body in place. After the chase nipples are tightened, use an allen wrench to tighten the four set screws against the back plane too. Field wiring connection can be made inside the end feed busway section. Field wires are pulled though the conduit to meet with the color coded end feed wire leads. Connections are made using the lugs and shrink tubing provided. A separate ground lead is provided, and may be used as necessary. (Drill a .160 diameter hole in the back plane, use the #8-32x.375 self-tapping screw and ring lug for ground).



8. Once the wiring connections are complete, snap the cover back onto the back plane.

