



Vertiv™ Liebert®

PS15 UPS

High Performance Line  
Interactive UPS for Critical  
Network Power Protection



*Liebert PSI5 is a compact, Automatic Voltage Regulation (AVR) line-interactive UPS system designed especially for IT applications such as network closets and small data centers.*

The Liebert PSI5 UPS supports advanced pure sine wave output on battery to safeguard critical IT equipment and business electronics. It also provides reliable power protection for servers, critical nodes, network workstations, large network peripherals, network routers, bridges, and other electronic equipment. With 3 different form-factors available, the Liebert PSI5 has been designed to ensure power continuity for a wide array of applications.

## Ideally suited for

- Servers
- Network Closets
- Safety and Security systems
- Network Workstations
- Large Network Peripherals
- Storage
- VoIP
- Media Closet Equipment
- POS Systems

### 2U Rack/Tower (800VA - 5000VA)



- Convertible rack/tower design with rotatable LCD display provides flexible installation options
- Extended runtime capability with external battery cabinets for hours of back-up time
- Vertiv Intellislot SNMP/Webcards available for remote power management, and environmental sensor support

### 1U Rack Mount (1000VA, 1500VA)



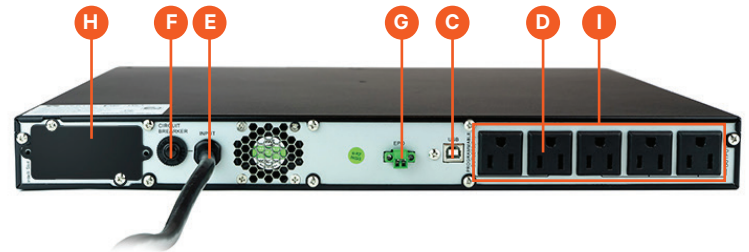
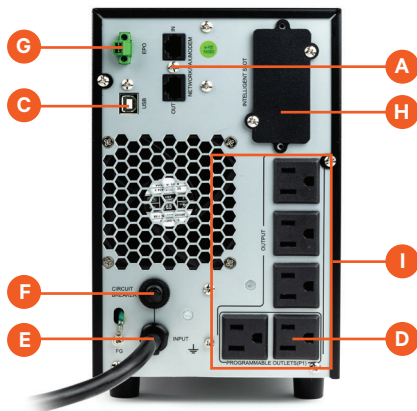
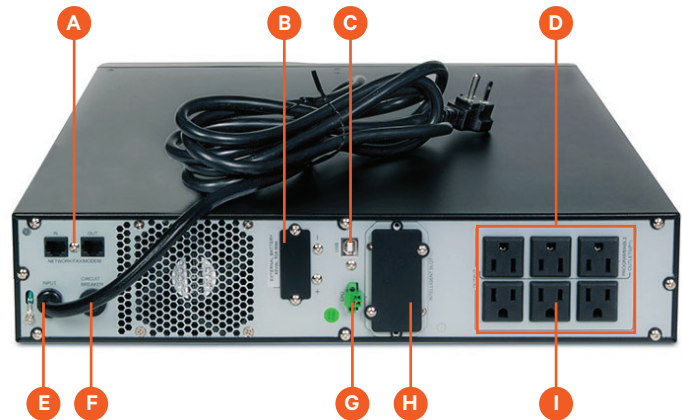
- Compact 1U Rack Mount design for applications with limited rack space
- Comes with rack mounting hardware included
- Vertiv Intellislot SNMP/Webcards available for remote power management, and environmental sensor support

### Mini Tower (750VA, 1100VA, 1500VA)



- Compact Mini Tower design for tower servers and/or applications with no available rack
- Plug and play solution requiring no installation
- Vertiv Intellislot SNMP/Webcards available for remote power management, and environmental sensor support

- A** RJ-45 Data Line Surge Connectors
- B** Extended Runtime Battery Connection
- C** USB Port
- D** Programmable Outlet Group
- E** Input Power Cord
- F** Input Circuit Breaker
- G** Emergency Power Off (EPO) Connector
- H** Liebert IntelliSlot® Port Optional (Communications Card)
- I** Output Receptacles



## Reliable UPS protection to keep your network up and running

The flexible design of the Liebert® PSI5 allows the UPS to be tower (MT models), 1U rack mountable (1U models), or to be configured as a self-standing tower or to be rack-mounted within a 2U space (RT models). It is available from 750VA to 5000VA with both 120V or 208V models.

The Liebert PSI5 UPS features an innovative advanced line-interactive design incorporating buck/boost Automatic Voltage Regulation (AVR) technology.

This protects against utility voltage fluctuation by raising and lowering utility power to the level needed by the connected equipment. It also allows the UPS to prolong battery life by maximizing its time on utility power before going to battery.

With high efficiency and 0.9 power factor operation, the Liebert PSI5 will meet your critical application needs. You can rest assured that your business is protected with this Vertiv solution, which includes a standard, two-year advanced exchange product warranty.

## What's In The Box

- UPS Unit
- USB Type A to USB Type B cable 1.8 meter (6ft) in length
- Printed quick start guide with safety instructions
- Adjustable 4 post rack mounting kit (not included with Mini Tower)
- Support base for tower configuration (2U Rack/Tower Models Only)
- Power Insight Management software (free download from Vertiv.com)

## High Availability

**0.9 Output Power Factor:** More usable power enables more connected loads saving space and costs

**Wider Input Voltage Window:** Prolongs battery life by allowing the UPS to maximize the use of utility power before transferring to battery when input exceeds specified limits (76 to 146 VAC @120V)

**Full Sequenced Battery Testing:** The Liebert® PSI5 UPS includes an automatic and manual self-diagnostic test feature. This provides a comprehensive analysis of the condition of the batteries within the UPS and will notify you when the internal batteries need to be replaced.

**Advance Early Warning of UPS System Status:** The Liebert PSI5 UPS offers multiple audible and visual alarms to immediately alert you to an input voltage fluctuation (buck/boost), output overload, low battery or replace battery condition.

### Optional Liebert MicroPOD Output Distribution and Maintenance Bypass Module

When your computer system can't be without power, even for scheduled UPS maintenance, the Liebert MicroPOD ensures continuous uptime. It allows you to manually transfer connected equipment to utility power permitting scheduled service or UPS replacement without the need to shut down connected equipment.

#### Features include:

- 2U height minimizes rack space requirements
- Installs with plug-and-play ease

## Flexibility

**Up to Seven Battery-Backed Outlets:** Allows the Liebert PSI5 to be more flexible in accommodating additional equipment to be connected to the UPS via the receptacles.

**Configurable Input Voltage Window:** Allows the UPS to be properly matched to the incoming utility power and adjusts its input window and transfer points to supply regulated power to connected loads within the selected range.

**Programmable Outlet Group:** Power cycle connected equipment and load shed on battery to extend run time.

**Hot Swappable Batteries:** Increase product life and provide prolonged UPS reliability. Batteries are conveniently located behind the front bezel of the unit (RT models) or from the bottom (tower models).

## Manageability

**USB Communications:** Power management functions provide monitoring of UPS status and manage the automatic orderly shutdown of the computer if a power outage ever exceeds the battery capacity of the UPS. *Trellis™* Power Insight Shutdown Software is available at Vertiv.com.

**SNMP Communication Option:** Add an optional Liebert® IntelliSlot® IS-UNITY communications card to enable SNMP and web-based management for the Liebert PSI5 UPS. The Liebert IntelliSlot UNITY communication cards provide network integration connectivity and allow you to monitor and control your UPS from your network management station or any PC.

- Sends both SNMP traps and emails for event notification
- Auto-senses 10M/100M Ethernet
- Compatible with shutdown software to ensure graceful computer shutdown
- IS-UNITY-DP Communications Card also support Vertiv Liebert SN Series, Environmental Sensors
- Allows remote monitoring, start-up or restart for connected equipment.
- Select models include factory integrated network management card

**Remote Emergency Power Off:** Allows the UPS to be remotely shut down during an emergency.

## MicroPOD - Maintenance bypass and output distribution

The Liebert® MicroPOD (Power Output Distribution) is a maintenance bypass option for UPS products, 3 kVA and below. It allows removal of the UPS without powering down the connected equipment. The 2U POD's can be installed on the floor or mounted to a Liebert PSI5 using the included mounting brackets.

UPS VA rating	POD model number	Output receptacles	Plug to utility
500-1500VA UPS	MP2-115HW	Hard Wired	Hardwired
	MP2-115A	8 x 5-15R	5-15P
2000VA UPS	MP2-120HW	Hard Wired	Hardwired
	MP2-120C	8 x 5-15/20R	5-20P
	MP2-120E	4 x 5-15/20R; 1 x L5-20R	5-20P
3000VA UPS	MP2-130HW	Hard Wired	Hardwired
	MP2-130C	8 x 5-15/20R	L5-30P
	MP2-130E	2 x 5-15/20R; 1 x L5-30R; 4 x 5-15/20R	L5-30P
	MP2-130P	4 x 5-15R; 2 x L5-20R	L5-30P

## UPS Specifications for 2U Rack/Tower Models



Standard Models*	PSI5-800RT120	PSI5-1100RT120	PSI5-1500RT120	PSI5-2200RT120	PSI5-3000RT120	PSI5-5000RT208
Power Rating, VA/W	800VA/720W	1100VA/990W	1500VA/1350W	1920VA/1920W	2880VA/2700W	4250VA/3825W
Dimensions, W X D X H, IN (MM)						
Unit	17.2 x 16.1 x 3.5 (438 x 410 x 88)	17.2 x 16.1 x 3.5 (438 x 410 x 88)	17.2 x 20 x 3.5 (438 x 510 x 88)	17.2 x 24.8 x 3.5 (438 x 630 x 88)	17.2 x 24.8 x 3.5 (438 x 630 x 88)	17.2 x 24.8 x 3.5 (438 x 630 x 88)
Shipping	10.2 x 22.9 x 21.7 (258 x 582 x 550)	10.2 x 22.9 x 21.7 (258 x 582 x 550)	10.2 x 26.5 x 21.7 (258 x 672 x 550)	10.2 x 26.7 x 21.7 (258 x 782 x 550)	10.2 x 26.7 x 21.7 (258 x 782 x 550)	10.2 x 26.7 x 21.7 (258 x 782 x 550)
Weight, LB (KG)						
Unit	28.4 (12.9)	29.5 (13.4)	42.6 (19.3)	59.1 (26.8)	70.8 (32.1)	87.7 (39.8)
Shipping	32.2 (16.9)	37.9 (17.2)	51.8 (23.5)	70.1 (31.8)	81.8 (37.1)	98.8 (44.8)
Input/Output AC Parameters						
Nominal Voltage Setting			100/110/115/120(default) / 125			200/208/220/230/240
Voltage Range Without Battery Operation	75 to 146 VAC	75 to 146 VAC	75 to 146 VAC	75 to 146 VAC	75 to 146 VAC	150 to 281 VAC
Frequency Range			55~65Hz (57~63Hz Battery to Normal comeback)			
Surge Protection	1372J	1372J	1372J	1372J	1372J	2064J
Input Power Cord, 10ft (3m) Attached	NEMA 5-15	NEMA 5-15	NEMA 5-15	NEMA L5-20 std 5-20 adapter included	NEMA L5-30P	NEMA L6-30R
Output Receptacles – Not Controllable	(3) NEMA5-15R	(3) NEMA5-15R	(3) NEMA5-15R	(3) NEMA5-15/20R, (1) NEMAL5-20R	(3) NEMA5-15/20R, (1) NEMAL5-30R	(3) L6-30R
Output Receptacles – Controllable	(3) NEMA5-15R	(3) NEMA5-15R	(3) NEMA5-15R	(3) NEMA5-20R	(3) NEMA5-20R	(1) NEMAL6-30R
Transfer Time				4-6 ms Typical		
Battery Waveform				Pure Sinewave		
Power Rating, VA/W	800VA/720W	1100VA/990W	1500VA/1350W	1920VA/1920W	2880VA/2700W	4250VA/3825W
Battery Parameters						
Type			Valve-regulated lead-acid (VRLA) in compliance with UL 1989			
Recharge Time			4 hours to recover 90%			
Internal Battery Run Time						
Full Load	6 min	5 min	6 min	5 min	6 min	3 min
Half Load	16 min	14 min	18 min	14 min	16 min	10 min
Environmental						
Operating Temperature, °F (°C)			32° to 104° (0° to 40°)			
Storage Temperature °F (°C)			5° to 120° (-15° to 50°)			
Relative Humidity			20% – 90%, non-condensing			
Operating Altitude			0 to 9,942 (0 to 3,000) without derating. Operating temperature reduced 9 °F (5 °C) for each additional 1,640ft (500m) of altitude.			
Audible Noise	< 45 dB	< 45 dB	< 45 dB@line mode < 55 dB@battery mode	< 45 dB@line mode < 55 dB@battery mode	< 45 dB@line mode < 55 dB@battery mode	< 45 dB@line mode < 55 dB@battery mode
Agency						
Safety			UL 1778, c-UL-us Listed			
Emissions			FCC Part 15, Class B			
Network Surge			UL 497 B			
Transportation			ISTA Procedure 1A Certification			

\* PSI5 2U Rack/Tower UPS + IS-UNITY-SNMP card bundles available - Add an "N" to the end of the model number. Available through select distributors.

## Specifications for 1U Rack Mount & Mini Tower Models



Standard Models	PSI5-1000RM1201U	PSI5-1500RM1201U	PSI5-750MT120	PSI5-1100MT120	PSI5-1500MT120	
Power Rating, VA/W	1000VA, 900W	1440VA, 1350W	750 VA, 675W	1100 VA, 990W	1440 VA, 1350W	
Dimensions, W X D X H, IN (MM)						
Unit	17.2 x 20.1 x 1.7 (438 x 511 x 44)	17.2 x 24.8 x 1.7 (438 x 631 x 44)	5.7 x 14.8 x 8.7 (145 x 376 x 220)	5.7 x 14.8 x 8.7 (145 x 376 x 220)	5.7 x 19.1 x 8.7 (145 x 484 x 220)	
Shipping	22.1 x 23.4 x 5.5 (560 x 595 x 140)	23.4 x 27.8 x 5.5 (595 x 710 x 140)	9.1 x 17.7 x 12.8 (230 x 450 x 325)	9.1 x 17.7 x 12.8 (230 x 450 x 325)	9.1 x 22.4 x 12.8 (230 x 570 x 325)	
Weight, LB (KG)						
Unit	36.4 (16.5)	45.6 (20.7)	24.7 (11.2)	26.0 (11.8)	40.1 (18.2)	
Shipping	40.8 (18.5)	51.1 (23.2)	27.8 (12.6)	29.1 (13.2)	44.1 (20.0)	
Nominal Voltage Setting			100 / 110 / 115 / 120 / 125 VAC			
Input/Output AC Parameters						
Voltage Input Range (with battery operation)			0-150VAC			
Voltage Input Range (without battery operation)			75-146VAC			
Input Voltage Measurement Tolerance			3%			
High Line Buck to Battery			117 / 129/ 135 / 140 / 146 VAC			
Standard Models						
Power Rating, VA/W	1000VA, 900W	1440VA, 1350W	750 VA, 675W	1100 VA, 990W	1440 VA, 1350W	
Frequency Input Range						55-65 Hz (57-63 Hz Battery to Normal comeback)
Internal Rear-panel Input Breaker Rating	13A	16A	10A	13A	16A	
Input Surge Protection						ANSI C62.41, Category A, Level 3 1372 J
Input Power Cord						NEMA 5-15P, offset 90-degree type (3 m attached)
Output Voltages (on battery)						100 / 110 / 115 / 120 / 125 VAC(±1.5 on battery before alarm) user selectable (120 VAC is factory default)
Output Frequency (on battery)						60 Hz ±1%
Output Receptacles - not controllable						(3) NEMA 5-15R
Output Receptacles - controllable						(2) NEMA 5-15R (3) NEMA 5-15R
Transfer Time						Adjustable with User Setting 09 ST1: 4-6ms typical, 10ms max (default) ST2: 4-6ms Typical, 11ms max ST3: 8-10ms typical, 13ms max
Battery Waveform						Pure Sinewave
Output Overload Operation						100%- alarm warning 110% - alarm warning and shutdown after 10 seconds 120%- alarm warning and immediate shutdown
Protection						Electronic (over current, short circuit w/ latching shutdown)
AC-mode Efficiency		98%	96%			
Buck- and Boost-mode Efficiency			93%			
Type						Valve-regulated lead-acid (VRLA) in compliance with UL 1989
Recharge Time						6 hours to recover 90% 6-8 hours to recover 90%
Quantity x Voltage x Ah	4 x 6V x 9Ah	6 x 6V x 9Ah	2 x 12V x 9Ah	2 x 12V x 10Ah	2 x 12V x 9Ah	
Environmental						
Operating Temperature, ° F (° C)						32-104 (0-40)
Storage Temperature ° F (° C)						-5- 122 (-15- 50)
Relative Humidity						20% to 90% non-condensing
Operating Altitude						0 - 9,942 (0 -3,000) without derating Operating temperature reduced 9° F (5° C) for each additional 1,640 ft (500 m) of altitude.
Audible Noise						< 45dB < 45dB@line mode<55dB@ battery mode
Agency						
Safety						UL 1778, c-UL-us Listed
Emissions						FCC Part 15, Class B
Network Surge						UL 497 B
Transportation						ISTA Procedure 1A Certification



## Accessories and Options

### Replacement Internal Battery Kits

Part Number	Applicable To	Shipping Weight lbs.
PSI5-800BATKIT	PSI5-800RT120	13.6
PSI5-1100BATKIT	PSI5-1100RT120	14.1
PSI5-1500BATKIT	PSI5-1500RT120	25.5
PSI5-2200BATKIT	PSI5-2200RT120	37.8
PSI5-3000BATKIT	PSI5-3000RT120	38.8
PSI5-5000BATKIT	PSI5-5000RT208	41

### External Battery Cabinets

Part Number	Applicable To	Shipping Weight lbs.
PSI5-24VBATT	PSI5-800RT120, PSI5-1100RT120	51.8
PSI5-48VBATT	PSI5-1500RT120	70.3
PSI5-72VBATT	PSI5-2200RT120 PSI5-3000RT120 PSI5-5000RT208	96.1

Note: Runtimes with EBC are shown on page 11

### Extended Battery Cabinet Interconnect Cable

Part Number	Applicable To	Shipping Weight lbs.
PSI5-24VCBL1	PSI5-24VCBL1	1.56
PSI5-24CBL6	PSI5-24VCBL6	2.8
PSI5-48VCBL1	PSI5-48VCBL1	1.56
PSI5-48VCBL6	PSI5-48VCBL6	2.8
PSI5-72VCBL1	PSI5-72VCBL1	1.56
PSI5-72VCBL6	PSI5-72VCBL6	2.8

### Mounting Kit Options

These mounting kits are only applicable to 2U Rack/Tower Products

Application	Model Supported	Style	Part Number	Description
2 Post-Telecom rack	PSI5 2U UPS family up to 5kVA	Bracket	2POSTRMKIT	Flexible installation capability on typical 2 post network equipment racks. Securely mount the UPS into a typical 3-6" rail width solution
		Shelf	RS500	Flush-mount shelf for 19" rack wide
		Shelf	RS600	Center-mount shelf for 19" rack wide
		Shelf	RS700	Flush-mount shelf for 23" rack wide
		Shelf	RS800	Center-mount shelf for 23" rack wide
Wall Mount	PSI5 2U up to 5kVA	Bracket	WMBKT2U	Wall mount bracket holds (1) PSI5 2U product, steel painted black

Note: RS600 and RS800 kits include adapter brackets for installation of up to (2) Liebert PSI5 2U model

### Step Down Transformer Options (Only for use with PSI5-5000RT208)

Part Number	Description
TDU-6000RTL630	6000VA, 208/120VAC Step-down transformer with L6-30P Input with 8 x NEMA 5-15/20 and 2 x L5-30R
TDU-4000RTL630	4000VA, 208/120VAC Step-down transformer with L6-30P Input with 8 x NEMA 5-15/20 and 2 x L5-20R

### Network Communication Cards and environmental sensors

Optional Intellislot cards are compatible with all Liebert PSI5 UPS systems

Network Communications	IS-UNITY-SNMP	10/100 Mbit Ethernet SNMP, Device Web Page, with MIB and configuration cable
	IS-UNITY-DP	Same as IS-UNITY-SNMP plus SN series environmental sensor support
	IS-RELAY	Intellislot Interface Kit for Relay Contacts
Environmental Sensors	SN-Z01	Integrated cable with single temperature sensor
	SN-Z02	Integrated cable with three temperature sensors
	SN-Z03	Integrated cable with three temperature and one humidity sensors
	SN-T	Modular with single temperature sensor
	SN-TH	Modular with single temperature and single humidity sensor
	SN-2D	Modular with two door contact inputs
	SN-3C	Modular with three dry contact inputs
	SN-L20	Modular leak zone sensor with 20 foot cable (Liebert RDU-S only)
UPS manageability options	Trellis™ Power Insight Software Management	Trellis™ Power Insight is a complimentary web-based software designed to monitor up to 100 Vertiv™ UPSs and rPDUs

## Liebert® PSI5 UPS - Power Assurance Services

### Power Assurance Package

Bundled Start-up Service AND 5-Year On-site Emergency Response	Standard	With LIFE Services	With Removal	With LIFE and Removal
Equipment Model / Type	Part Number	Part Number	Part Number	Part Number
Liebert PSI5 UP TO 3KVA	PAPPSI-1K3K	PAPPSI-1K3KLF	PAPPSI-1K3KRMV	PAPPSI-1K3KRLF
PSI5 5KVA	PAPPSI-5K	PAPPSI-5KLF	PAPPSI-5KRMV	PAPPSI-5KRLF
Liebert PSI5 EXTERNAL BATTERY CABINETS	PAPPSI-BATT	-----	PAPPSI-BATTRMV	

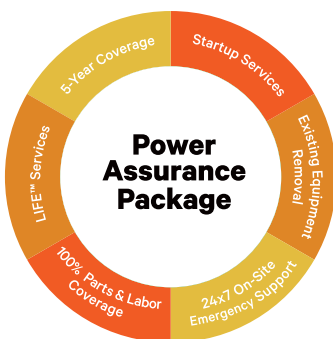
### Power Start-up Services

Startup service Only	Standard	With Removal
Equipment Model / Type	Part Number	Part Number
Liebert PSI5 UP TO 3KVA	SUPSI-1K3K	SUPSI-1K3KRMV
PSI5 5KVA	SUPSI-5K	SUPSI-5KRMV
Liebert PSI5 EXTERNAL BATTERY CABINETS	SUPSI-EXTBTCB	SUPSIEXTBTCBRMV

### Power Emergency Services

5-Year On-site Emergency Coverage - Only	Standard	With LIFE Services
Equipment Model / Type	Part Number	Part Number
Liebert PSI5 750 and 800VA	PEPPSI-8005Y	PEPPSI-8005Y
Liebert PSI5 1000 and 1100VA	PEPPSI-11005Y	PEPPSI-11005Y
Liebert PSI5 1500VA	PEPPSI-15005Y	PEPPSI-15005Y
Liebert PSI5 2200VA	PEPPSI-22005Y	PEPPSI-22005Y
Liebert PSI5 3000VA	PEPPSI-30005Y	PEPPSI-30005Y
Liebert PSI5 5000VA	PEPPSI-5K5Y	PEPPSI-5K5Y
Liebert PSI5 24VBATT EXT BATT CABINET	PEPPSI-24VBATT	PEPPSI-24VBATT
Liebert PSI5 48VBATT EXT BATT CABINET	PEPPSI-48VBATT	PEPPSI-48VBATT
Liebert PSI5 72VBATT EXT BATT CABINET	PEPPSI-72VBATT	PEPPSI-72VBATT

### Power Assurance Package - Summary



- Includes all below "Power Start-up Services" and "Power Emergency Services" support
- One Preventative Maintenance visit after 3rd year (5kVA UPS only)

### Power Emergency Services - Summary

- On Site Service Support
- Full-service five (5) year contract term commencing upon the start-up date
- 100% parts coverage, including internal batteries, POD and web card
- 100% labor and travel coverage 7 days/week, 24 hours/day
- 24-Hour Customer Resolution Center via 1-800-LIEBERT
- Access to Customer Services Network portal

### Power Startup Services - Summary

- Installation includes mounting and start-up of new UPS or EBC (excludes hard-wired applications)
- Services performed by Vertiv factory trained technician
- Services performed 7 X 24, excluding national holidays within the 48 contiguous states and Hawaii
- Removal and disposal of existing UPS or EBC equipment, if selected

### LIFE™ Services includes above plus:

- Continuous Monitoring, Expert Analysis, and Proactive Response

Note: LIFE Services requires an UNITY card.

Please refer to the [Scopes of Work](#) for full and additional details.



## PSI5 Extended Warranty (800-5000 Va; 120 Vac & 208 Vac)

Warranty Extension List Price		
	Additional 1 Year	Additional 3 Years
UPS Model Number	Warranty Part Number	Warranty Part Number
<b>2U Rack/Tower UPS Models</b>		
PSI5-800RT120	1WEPSI5-800	3WEPSI5-800
PSI5-1100RT120	1WEPSI5-1100	3WEPSI5-1100
PSI5-1500RT120	1WEPSI5-1500	3WEPSI5-1500
PSI5-2200RT120	1WEPSI5-2200	3WEPSI5-2200
PSI5-3000RT120	1WEPSI5-3000	3WEPSI5-3000
PSI5-5000RT208	1WEPSI5-5000	3WEPSI5-5000
<b>Mini Tower UPS Models</b>		
PSI5-750MT120	1WEPSI5-750	3WEPSI5-750
PSI5-1100MT120	1WEPSI5-1100	3WEPSI5-1100
PSI5-1500MT120	1WEPSI5-1500	3WEPSI5-1500
<b>1U Rack Mount UPS Models</b>		
PSI5-1000RM1201U	1WEPSI5-1000	3WEPSI5-1000
PSI5-1500RM1201U	1WEPSI5-1500	3WEPSI5-1500
<b>External Battery Cabinets</b>		
PSI5-24VBATT	1WEPSI5-24VBATT	3WEPSI5-24VBATT
PSI5-48VBATT	1WEPSI5-48VBATT	3WEPSI5-48VBATT
PSI5-72VBATT	1WEPSI5-72VBATT	3WEPSI5-72VBATT

*Note: Extended warranties can only be ordered when ordering the UPS and prior to shipment.*

## 2U Rack/Tower UPS Runtime Tables

PSI5-800RT120									
Load			Number Of External Battery Cabinets (EBCs)						
			Internal Battery Only	1	2	3	4	5	6
%	VA	W	Minutes						
100	800	720	6	22	45	70	97	125	154
75	600	540	9	30	60	93	129	165	202
50	400	360	16	53	107	166	226	287	350
25	200	180	33	109	215	326	438	551	665
10	80	72	86	285	539	796	1053	1311	1569

PSI5-1100RT120				
Load			Number of EBCs	
			Internal Battery Only	1
%	VA	W	Minutes	
100	1100	990	5	17
75	825	743	8	24
50	550	495	14	44
25	275	248	30	91
10	110	99	87	244

Load			Number of EBCs				
			2	3	4	5	6
%	VA	W					
100	880	792	45	68	92	118	144
75	660	594	65	98	133	168	205
50	440	396	107	160	215	272	328
25	220	198	219	321	426	531	636
10	88	79	534	768	1003	1238	1473

## PSI5-1500RT120

Load			Number Of External Battery Cabinets (EBCs)						
			Internal Battery Only	1	2	3	4	5	6
%	VA	W	Minutes						
100	1500	1350	6	24	50	78	107	138	169
75	1125	1013	10	33	66	102	141	181	222
50	750	675	18	59	119	183	249	316	383
25	375	337.5	37	122	240	363	486	611	736
10	150	135	111	330	619	911	1203	1496	1790

## PSI5-2200RT120

Load			Number of EBCs	
			Internal Battery Only	1
%	VA	W	Minutes	
100	1920	1920	5	27
75	1440	1440	8	40
50	960	960	14	66
25	480	480	32	137
10	192	192	88	358

Load			Number of EBCs				
			2	3	4	5	6
%	VA	W					
100	1536	1536	72	111	152	194	237
75	1152	1152	104	159	216	274	333
50	768	768	170	257	346	435	525
25	384	384	336	497	661	824	989
10	153.6	154	835	1213	1592	1971	2350

## PSI5-3000RT120

Load			Number of EBCs	
			Internal Battery Only	1
%	VA	W	Minutes	
100	3000	2700	6	20
75	2250	2025	9	27
50	1500	1350	16	50
25	750	675	34	102
10	300	270	103	282

Load			Number of EBCs				
			2	3	4	5	6
%	VA	W					
100	2400	2160	52	78	106	134	164
75	1800	1620	74	112	151	191	232
50	1200	1080	122	182	244	306	370
25	600	540	244	358	473	589	705
10	240	216	619	887	1156	1425	1695

## PSI5-5000RT208 @ 208V NOMINAL

Load			Number of EBCs	
			Internal Battery Only	1
%	VA	W	Minutes	
100	4250	3825	3	15
75	3188	2869	4	20
50	2125	1913	10	36
25	1063	956	26	82
10	425	383	69	215

Load			Number of EBCs				
			2	3	4	5	6
%	VA	W					
100	4000	3600	30	44	60	76	92
75	3000	2700	43	63	85	108	131
50	2000	1800	70	104	139	175	212
25	1000	900	156	228	301	375	449
10	400	360	358	511	665	819	974

### PSI5-5000RT208

Load			Number of EBCs	
			Internal Battery Only	1
%	VA	W	Minutes	
100	5000	4500	3	15
75	3750	3375	4	20
50	2500	2250	10	36
25	1250	1125	26	82
10	500	450	69	215

Load			Number of EBCs				
			2	3	4	5	6
%	VA	W					
100	4000	3600	30	44	60	76	92
75	3000	2700	43	63	85	108	131
50	2000	1800	70	104	139	175	212
25	1000	900	156	228	301	375	449
10	400	360	358	511	665	819	974

## 1U Rack Mount UPS Runtime Tables

### PSI5-1000RM1201U

Load			
%	VA	W	Minutes
100	1000	900	5
75	750	675	8
50	500	450	13
25	250	225	34
10	100	90	91

### PSI5-1500RM1201U

Load			
%	VA	W	Minutes
100	1500	1350	5
75	1125	1013	8
50	750	675	14
25	375	338	34
10	150	135	91

## Mini Tower UPS Runtime Tables

### PSI5-1100MT120

Load			
%	VA	W	Minutes
100	1100	990	5
75	825	743	8
50	550	495	14
25	275	248	37
10	110	99	107

### PSI5-1500MT120

Load			
%	VA	W	Minutes
100	1500	1350	6
75	1125	1013	10
50	750	675	18
25	375	338	42
10	150	135	111

### PSI5-750MT120

Load			
%	VA	W	Minutes
100	750	675	6
75	563	506	10
50	375	338	18
25	188	169	41
10	75	68	93

